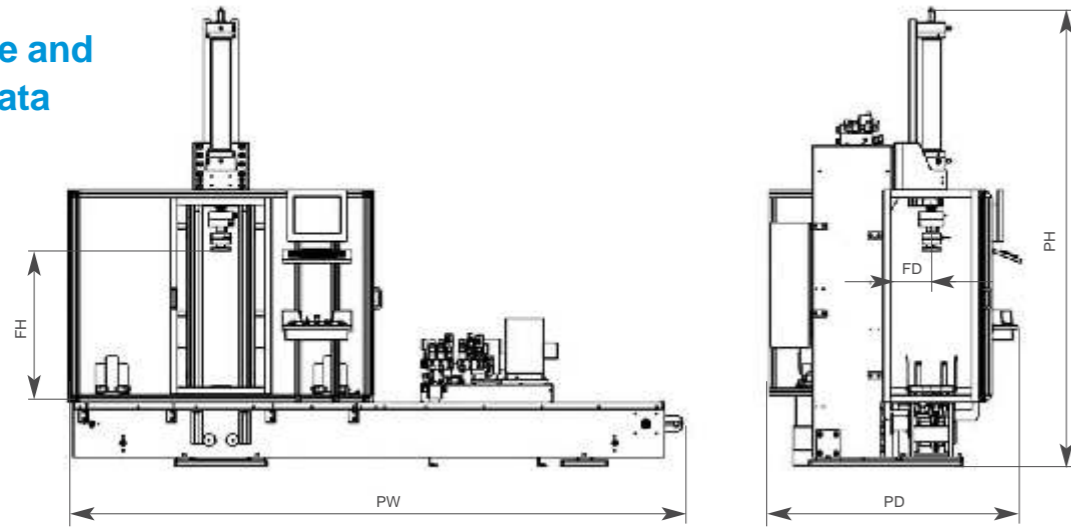


Performance and Technical Data



Force kN	Nominal force max.	200	Press Dimensions mm	Depth of aperture FH	900
	Control range	10-195		Overhang FD	250
	Deviation of force control	<2%		Minimum working height	460
	Testing Force Range 1	20-195		Width of press (dependant on length of springs)	4000
Position mm	Testing Force Range 2, (Optional)	5-50	Weight kg	Depth of press PD	1700
	Deviation range (from 10% of nominal force)	<1%		Pickup hole diameter	25
	Display resolution accuracy	0,1		Motor	3000
	Total stroke	700		Performance kW	5,5
Speed mm/sec	Measuring accuracy	0,01	Spring insertion	left or right according to customer specification	
	Positioning accuracy	0,1			
	Display resolution accuracy	0,1			
	Press speed	30			
	Feeding speed	70			
	Return speed	70			

ULBRICH
www.ulbrich-group.com

Competence in press and jointing machines, hydraulic solutions, industrial adhesives & sealants and speciality lubricants



We are highly successful private limited company with over 50 years of engineering experience. Our Head Quarters are located in Austria, with subsidiaries throughout Central and Eastern Europe

Our core technology revolves around the design, production and marketing of high quality Industrial Solutions

- Press and jointing machines for production and test analysis
- Special hydraulic equipment and complex hydraulic systems
- Hydraulic components
- Industrial adhesives & sealants
- Speciality lubricants
- Conformal coatings and resins for electronic applications

**Test equipment
Universal Spring Tester**



Option to measure the angle of deflection, lateral displacement and the lateral forces of coil springs

In addition to the analysis of the spring characteristics curve it is necessary to measure the angle of deflection, lateral displacement and the lateral forces of coil springs.

This is especially important with regards to matching up opposing transverse springs (left-right) assembled in railway undercarriages. Here it is absolutely essential to match together corresponding transverse spring characteristics in order to avoid lateral distortions when the wheel set springs are in compression.

The specially designed Ulbrich X Y lateral force measurement system (loose sled-slide rails) enables the operator to measure both the lateral movement as well as the actual displacement from the centre of the spring. Both values can be combined in the analysis / test protocol.

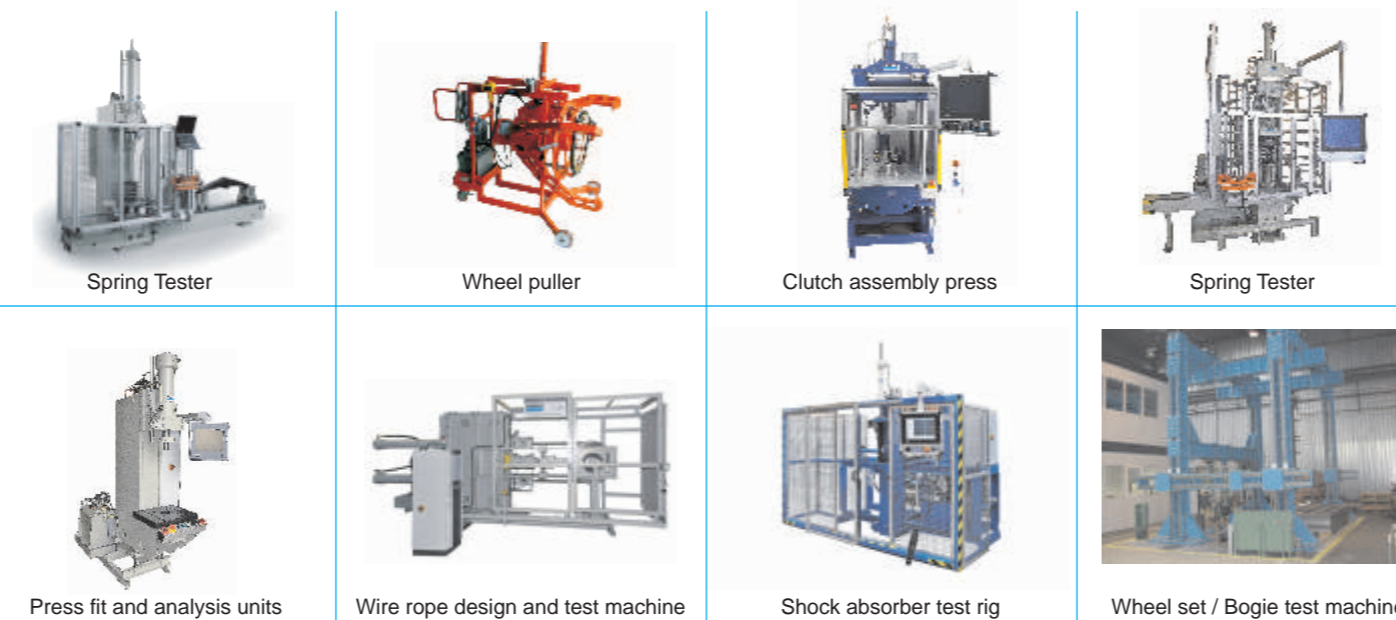
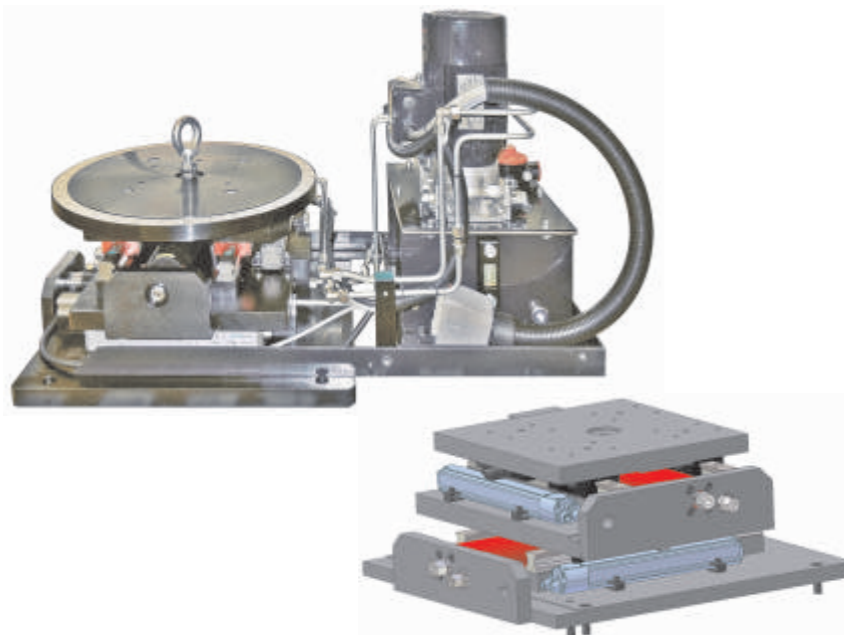
TYPICAL TEST-RUN

A spring is inserted and the XY table then utilises position encoders to measure the lateral displacement, the direction of displacement together with the vertical displacement resulting from the (press stroke mm.) compression of the spring. The vector resulting from the specific force / displacement is recorded. The XY platform and compressed spring is then driven back to the central axis position of the spring by hydraulic cylinders by retracing the recorded vector data.

Actual re-position force applied in order to bring the spring to the back to the central axis position is measured by precise load cells.

We are now in a position to plot the actual correlation between compression force, lateral displacement (mm) and lateral displacement force (kN).

Resulting values are then classified in a test protocol as being I.O. or N.I.O. which is displayed on the PC screen in accordance with the customer specifications entered into the test programme. The XY work table can be easily fitted and also removed should the operator need to test parabolic springs where the XY system is not required.



A – 2512 Tribuswinkel
Josefthalerstr. 34
Tel.: +43/2252/802 13
Fax: +43/2252/806 59
office@ulbrich.at
www.ulbrich.at

D – 795 39 Lörrach
Im Vogelsang 10
Tel.: +49/7621/162 021
Fax: +49/7621/162 022
r.winkler@ulbrich-group.com
www.ulbrich-group.com

CZ – 251 68 Sulice
Zelivec 344
Tel.: +420/323 673 046
Fax: +420/323 673 047
ulbrich@ulbrich.cz
www.ulbrich.cz

H – 2030 Erd
Lakatos u. 35
Tel.: +36/23/378 070
Fax: +36/23/378 394
office@ulbrich.hu
www.ulbrich.hu

SI – 2367 Vuzenica
Sv. Vid 26
Tel.: +386/2/87 64 282
Fax: +386/2/87 64 283
info@ulbrich.si
www.ulbrich.si

SK – 823 62 Bratislava
Revolučna 23
Tel.: +421/2/434 240 16
Fax: +421/2/432 959 83
bratislava@ulbrich.sk
www.ulbrich.sk

ULBRICH
www.ulbrich-group.com

Process-Integrated determination of data characteristics and Quality control of Leaf and Coil springs

Springs need to be regularly inspected and their load carrying, energy absorption and elasticity characteristics controlled and recorded.

This testing is carried out by approved rail and rolling stock maintenance organisations. The major elements of testing include the analysis of impact force on springs and the resulting correlation between compression achieved in relation to the height for coil springs, and in the case of leaf springs the relationship between the changing of length as the force is applied and then removed.

The force over distance controlled Ulbrich Spring Tester system enables the operator to carry out all the Statutory testing requirements. Upon tensioning and subsequent release of tension, the resulting compression and in the case of leaf springs the changing length; will be

recorded by distance and force sensors. Using this saved information, the load carrying capacity, height and even the entire spring characteristic curve can be calculated. Thus allowing the rail test centre to use the data from every test cycle to compare the pre-programmed values defined by the Set tolerances with those actually achieved. The analysis of required / acceptable values with those figures actually attained is presented on the Control Screen as I.O. (In Order) or as N.I.O. (Not In Order) and is automatically saved. In addition to this function it is also possible to print this result onto a label to be then directly attached to the corresponding spring. Springs can now be paired up safely by analysing the information printed on the labels. Only those springs lying within allowable parameters can be paired up. The resulting spring characteristics curve can also be printed if this should be requested for documentation. The test

run for every type of spring is pre-programmed and can be called up by the operator by entering the relevant programme number.

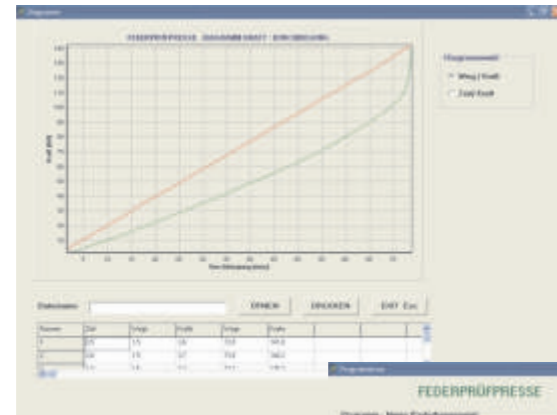
The name of the operator, sequential number and all other important factors are automatically saved for every test cycle.

In addition to fulfilling the criteria of the quality and safety regulations, the utilisation of the fully automatic spring feeder and integrated test run systems enables the railway test and service department to raise their efficiency and safety levels whilst also optimising productivity.

With the addition of an extra press surface module, the ability to measure and record lateral deformation, lateral forces / vectors of coil springs can also be integrated.

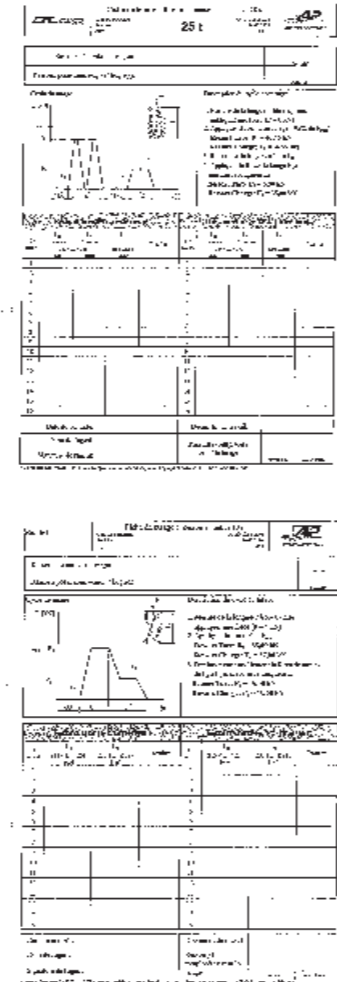
Basic characteristics of the control and test software

- Simple Windows-based control screens
- Programme memory capable of multiple
- Press cycles / multiple spring types
- Programme call up via Part No., Contract No., or other variables
- Protocol records operator name, part No., Contract No.
- All relevant process data presented on a visually accurate and easy to read screen layout
- Actual real time values are displayed throughout press cycle
- Result of press, i.e. N.I.O. or I.O. displayed on control screen
- Operational hours and No. of parts tested; displayed & recorded
- Press result, operator, date & time, programme No., plus all system relevant data in numerical and graphical format is registered after every press run and saved on the P.C's Hard Drive
- The test results can be printed in the form of a Test Protocol or even printed as a label
- Statistical analysis optional
- Network connectivity
- Further interpretation and utilisation of results via standard software is possible upon request
- Memo fields can be integrated upon request

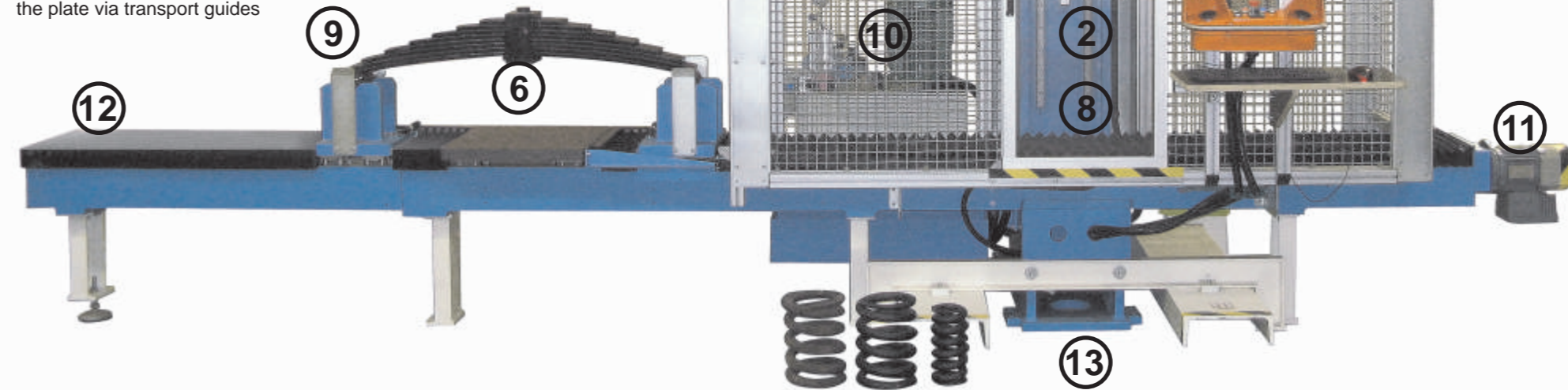


ULBRICH

C200 kN Spring Tester for Leaf and Coil springs



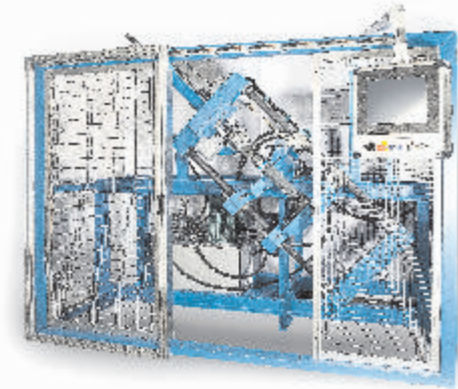
- 1 High resolution / fully integrated distance measurement & control
- 2 Extra guide cylinder also prevents any unwanted rotational movement
- 3 Independent fine tuning of distance over force via high precision proportional hydraulic block
- 4 Highly robust precision dynamometer, the option of a second dynamometer provides the option of a second measurement range Calibration function is included in the software
- 5 The entire working area is enclosed by a safety mesh additional protection and safety components can be integrated upon request
- 6 Press plate for leaf springs positioning beneath the plate via transport guides
- 7 Communication via PC, industry PC or notebook in order to set test parameters, to display, analyse and save results
- 8 Spring contact surfaces and press plates easily interchangeable
- 9 Rolling bearings can be easily adjusted in accordance to the spring size



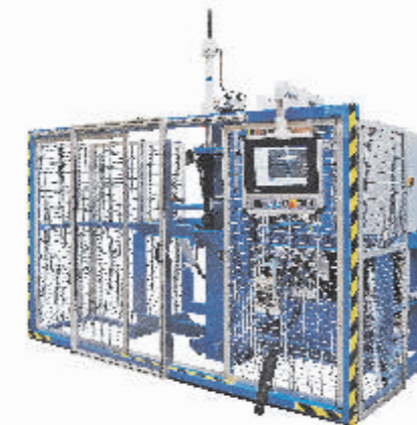
Lateral tension, travel and vector measurement module available upon request

- 10 Powered by low noise two speed pump mounted on oscillation dampening elements Control of filter contamination, oil level and operational temperature Fault display on control screen
- 11 Spring feed and placement via transport guides
- 12 Open and easily accessible space for simple loading and unloading of heavy springs by fork-lifter or crane
- 13 Wide and adjustable pedestal, hence no special flooring or extra foundations needed Elongation of the press itself is compensated by the Spring Tester Software. Simple Windows based programming following the pre-defined requirements and test parameters set out by the relevant Governing Statutory Authority
- 14 Spring insertion left or right according to customer specification

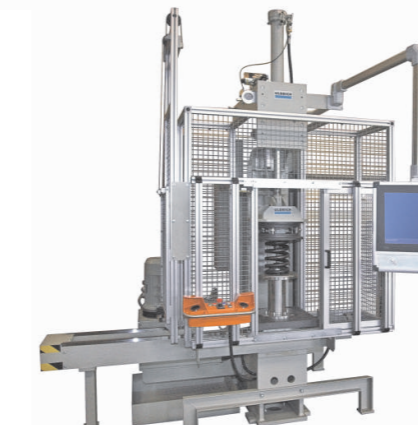
Integrated measurement system to analyse the displacement of leaf spring in correlation to the compression force



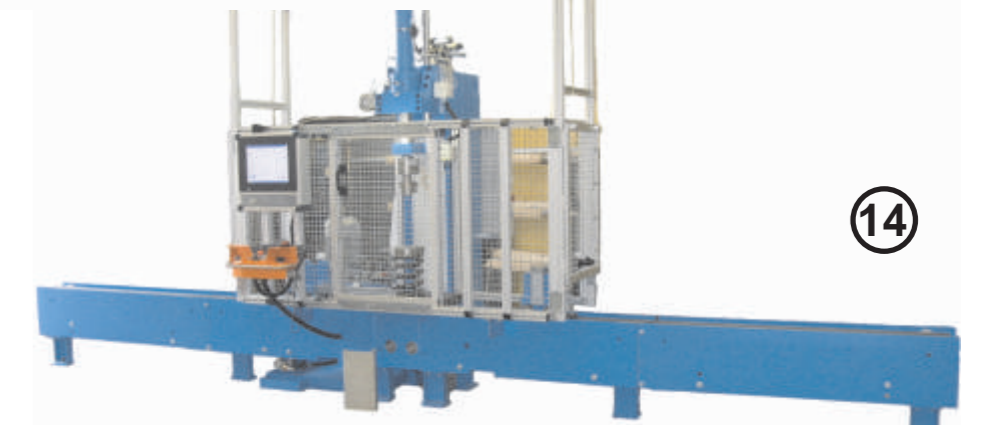
Spring and Shock Absorber Test Machine



Shock Absorber Test Machine



Spring Tester



Spring Tester



14